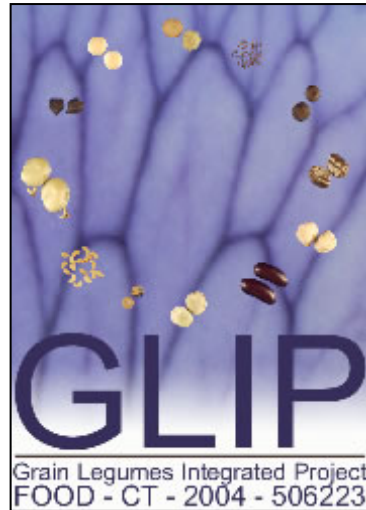


# **First GL-TTP Workshop**

## **“Targeting Science to Real Needs”**

**23-25 April, 2007 – Paris, France**

**sponsored by:**



**\* First announcement: January 9, 2007 \***

# First GL-TTP Workshop “Targeting Science to Real Needs”

23-25 April, 2007 – Paris, France

## Welcome to the First GL-TTP Workshop!

### GL-TTP

GL-TTP (Grain Legumes Technology Transfer Platform) is a not-for-profit organisation that bridges the gap between research and industry to increase the production and quality of grain legumes worldwide. GL-TTP was initiated in 2005 by the EU Grain Legumes Integrated Project (GLIP) to ensure the exploitation of the project outputs by the grain legume industry.

Having a foot in both the research and industry worlds, GL-TTP is in an ideal position to identify the specific needs and constraints of grain legume breeders and channel the latest research results and technologies through an accelerated pipeline to the grain legume industry.

### Objectives of the First GL-TTP Workshop

Reflecting the needs of grain legume breeders, the workshop will focus on the exploitation of genetic resources, and on the concrete use and integration of molecular technologies in breeding. The main themes addressed in this first workshop will be genetic diversity, disease resistance, abiotic stress tolerance and seed quality.

The workshop will consist of highly interactive sessions, where the specific needs and interests of grain legume breeders will be addressed through concrete examples of research application, training sessions, and direct transfer of genetic material. Most importantly, proposals will be brainstormed throughout the workshop to set up Research & Development and technology transfer projects in partnership between research scientists and plant breeders.

### Audience

The primarily intended audience will be the GL-TTP members: mostly **grain legume breeders** that are eager to embrace new technologies and set up international networks to optimise their exploitation of genetic resources, and **research scientists** that are interested in interacting with industry and in setting up partnership for future R&D.

The workshop will be **open to non-GL-TTP members** interested in learning more about GL-TTP activities, or simply interested in hearing, and discussing with, some of our renowned guest contributors.

**We look forward to welcoming you at the first GL-TTP workshop, on 23-25 April 2007, in Paris, France!**

## Overview: spirit and provisional content

The workshop interactive sessions will benefit both research scientists and plant breeders and foster long-term partnerships to optimise the advancement of research and application in Industry.

**Research scientists** will be informed of the needs and constraints of legume breeders in terms of genetic resources (diversity, evaluation, exploitation, management), breeding objectives (priority-settings for specific agro-ecological zones and specific end-uses), and will and capacity to integrate molecular technologies in their breeding strategies.

**The plant breeders'** needs and interests will be addressed by updates on genomics-assisted breeding, new molecular and tissue culture technologies, new genetic resources and molecular markers to assist breeding.

One of the top priorities of GL-TTP is to facilitate the exploitation of genetic resources to broaden the genetic basis of legume breeding. Towards this goal, curators of key legume germplasm banks around the world will present their collections and interact directly with the plant breeders to facilitate their access to genetic resources of interest. Experts in genetic diversity will present the population structure of a few legume species, and show how genetic diversity could be measured, within and in-between breeding programmes and in relation to exotic accessions, to propose rational uptake or exchanges of genetic resources based on genetic distance. Finally, our keynote speaker will showcase how molecular technologies can assist the exploitation of wild germplasm in breeding programmes, uncover and introgress previously hidden positive traits from the wild and lift long-standing barriers of yield.

Specific research talks and lectures will address how candidate genes can be identified using transcriptomics, proteomics, metabolomics, and *in silico* data mining, how gene function can be validated using TILLING, and how research on model legumes can expedite the improvement of crop legumes. In this first GL-TTP workshop, the research scientists will focus on how these strategies contribute to (1) the understanding of seed development for improvement of seed composition, (2) the identification of genes responsive to and responsible for salinity and drought tolerance, and (3) improving legume resistance to diseases such as *Aphanomyces* root rot, chocolate spot, powdery mildew, fusarium wilt, broomrape, pea seed-borne mosaic virus.

**At the interface**, in consultation with scientists and breeders, GL-TTP will organise different levels of technology transfer for the legume industry: short term (eg transfer of seeds of interest, application of available markers), middle term (eg. development and validation of molecular markers for marker-assisted selection), longer term (eg. generation of near-isogenic lines of current elite breeding lines by marker-assisted introgression of positive traits from new genetic resources, validation of candidate genes from model to crop, analysis of allelic diversity, development of perfect markers, etc).

Each project proposal for Research & Development or technology transfer will be submitted to the GL-TTP members. In the case of shared interests, research/industry partnerships will be set up to collaborate and refine a common project, share resources, and either directly co-finance their project, or seek external funding together. Suitable calls for proposals (eg from EU FP7) will be considered at the workshop to assist the new partners in funding their collaborative projects.

## Tentative schedule

### 23 April

10:00-10:45 Registration  
10:45-12:45 Session 1 – Welcome and introductory talks, Genomics-Assisted Breeding  
12:45 -14:00 Lunch  
14:00-16:00 Session 2 – Application to seed quality  
16:00-16:30 Tea break  
16:30-18:30 Session 3 – Application to abiotic stress  
Free time in Paris and dinner on your own

### 24 April

8:30-10:30 Session 4 – Needs in genetic resources, germplasm banks overview  
10:30-11:00 Coffee break  
11:00-12:45 Session 5 – Molecular technologies and exploitation of exotic germplasm  
12:45 -14:00 Lunch break  
14:00-16:00 Session 6 – Genetic diversity in breeding: evaluation and exchange networks  
16:00-16:30 Tea break  
16:30-18:30 Session 6 continued and session 7: Integrated data management  
18:30-21:00 free time in Paris  
21:00-23:30 Gourmet cruise

### 25 April

8:30-10:30 Session 8 – Needs in disease resistance, germplasm and molecular marker status  
10:30-11:00 Coffee break  
11:00-12:45 Session 9 – Current research and new molecular markers for disease resistance  
12:45 -14:00 Lunch break  
14:00-16:00 Session 10 – Recapitulation of partnerships and projects, priority-setting  
16:00-16:30 Tea break  
16:30-18:00 GL-TTP General Assembly

## Confirmed speakers

Outstanding scientists have been invited to contribute to the workshop based on their capacity to address the priorities identified in GL-TTP. Confirmed speakers are listed below in alphabetical order.

**Mike Ambrose**, John Innes Centre, Crop Genetics, Colney, NR4 7UH, Norwich, UK

**Abdel Bendahmane**, INRA-URGV, 2 rue Gaston Crémieux, 91057 Evry cedex, France

**Clare Coyne**, 59 Johnson Hall, WSU, Pullman, WA 99164-6402, USA

**Martin Crespi**, CNRS-ISV, 1 avenue de la Terrasse, Bat 23, 91198 Gif sur Yvette, France

**Claire Domoney**, John Innes Centre, Metabolic Biology, Colney, NR4 7UH, Norwich, UK

**Gérard Duc**, INRA-URLEG, BP 86510, 21065 Dijon cedex, France

**Andy Flavell**, Dundee University at SCRI, Plant Research Group, Invergowrie, DD2 5DA Dundee, UK

**Bonnie Furman**, ICARDA, PO Box 5466, Aleppo, Syria

**Jean-Christophe Glaszmann**, GCP at CIRAD, Avenue Agropolis, 34398 Montpellier Cedex 5 Montpellier, France

**Catherine Golstein**, GL-TTP, 38 rue de Berri, 75008, Paris, France

**Andrzej Kilian**, Diversity Arrays Technology, 1 Wilf Crane Crescent, Yarralumla, ACT 2600, Australia

**Helge Küster**, Bielefeld University, Institute for Genome Research and Systems Biology, Center for Biotechnology, D-33594 Bielefeld, Germany

**Susan McCouch**, 418 Bradfield Hall, Cornell University, Ithaca, NY 14853, USA

**Sergio Ochatt**, INRA-URLEG, BP 86510, 21065 Dijon cedex, France

**Marie-Laure Pilet-Nayel**, INRA, UMR Amélioration des Plantes et Biotechnologies végétales, BP 35327, 35653 Le Rheu Cedex, France

**Diego Rubiales**, IAS-CSIC, Apdo correos 4084, Alameda Obispo S/N, 14080 Cordoba, Spain

**Anne Schneider**, AEP, 12 Avenue George V, 75008 Paris

**Richard Thompson / Karine Gallardo**, INRA-URLEG, Génétique et Amélioration des plantes, Domaine d'Epoisses, 21110 Bretenieres, France

**Dominique This**, GCP at CIRAD, Avenue Agropolis, TA 40/03, 34398 Montpellier cedex 5, France

**Ana M. Torres**, IFAPA-CICE (Junta de Andalucía), CIFA Alameda del Obispo, Apdo. 3092, 14080 Cordoba, Spain

**Rajeev Varshney**, ICRISAT, Patancheru 502 324, Andhra Pradesh, India

**Peter Winter / Ralf Horres**, GenXPro GmbH, FIZ, Altenhöferallee 3, 60438 Frankfurt am Main, Germany

Additional speakers will contribute to the workshop.

## Call for Contribution

Participants wishing to contribute to the workshop are welcome to submit an abstract to the organising committee at [gl-ttp@prolea.com](mailto:gl-ttp@prolea.com). The abstract will be considered for a presentation or for integration into a GL-TTP project proposal, depending on its relevance for the workshop and the needs of the GL-TTP members. The selected speakers will be notified by March 8, 2007.

The abstract must be written as in the model below, saved as “your last name-abstract gl-ttp”, and sent to [gl-ttp@prolea.com](mailto:gl-ttp@prolea.com) together with the registration form.

### **Title**

First name1 Last name 1, First name2, Last name 2, etc

Institution address of potential speaker (underlined name above)

e-mail address of potential speaker

Text, 400 words maximum, written single-spaced in unjustified paragraphs

## Venue

The First GL-TTP Workshop will be held in Paris, France, at the three-star hotel

### **Mercure Paris Bercy**

77, rue de Bercy

75012 PARIS France

Tél : +33 (0)1 53 46 50 50

[http://www.accorhotels.com/mercure\\_paris\\_bercy.htm](http://www.accorhotels.com/mercure_paris_bercy.htm)

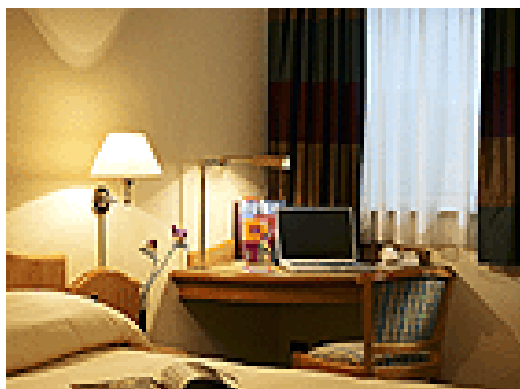
which offers all amenities needed for the workshop, including excellent facilities for plenary presentations, brainstorming and networking. Located in the business district in the East of Paris, the hotel enjoys a surprisingly quiet location, overlooking the Bercy Park and featuring a large sunny terrace where to schmooze with your fellow workshop participants. Well served by public transport, the hotel is under half an hour's reach of most attractions of the City of Lights.



The hotel is two minute walking distance from the “Bercy” stop of Metro lines 6 and 14 (Meteor), and RER A. A local map and more detailed information for access to the hotel will be posted on the dedicated website of the workshop.

## Accommodation

Sixty rooms are on hold for the workshop participants at the workshop venue (Hotel Mercure Paris Bercy) until March 8, 2007.



We have negotiated a special GL-TTP workshop room rate of €130 per person and per night, breakfast included, instead of €157. If interested in this option, please make a reservation through the Local Organising Committee, **not directly to the hotel**, by ticking the corresponding option on the attached workshop registration form, or by letting us know by mail ([gl-ttp@prolea.com](mailto:gl-ttp@prolea.com)) by March 8, 2007. Please be aware that although the Local Organising Committee centralises the hotel reservations, all payments will be made directly to the hotel on an individual basis.

Other hotels near the workshop venue can be found on the cybevasion website (<http://www.cybevasion.com/hotels/france/paris.html>) using “Bercy” as the search criteria. Please note that the workshop hotel is featured on the website, with possible internet offers that may compete with the rate we have negotiated: feel free to opt for those offers if you agree with the corresponding reservation conditions. Finally, if reserving on your own, make sure you secure your accommodation early considering this period falls during the Spring holiday break in France.

## Social event



We propose to the workshop participants a **gourmet cruise** to relax and socialise while discovering the finest Parisian monuments along the river Seine, over an exquisite meal created on board by a French Chef sacred “Meilleur Ouvrier de France”. If interested, please select the option in the registration form by April 2<sup>d</sup>, and pay together with the workshop registration fees.

## Registration

To register, please fill in the attached registration form, and send it back to the address indicated at the bottom of the form.

Please note that GL-TTP members do not need to pay registration fees. The GL-TTP workshop is part of the products and services GL-TTP offers to its members. Non-GL-TTP members can attend the GL-TTP workshop by paying registration fees of €1,500 per organisation. All participants are asked to contribute €80 per day to help cover the costs of the workshop venue, all breakfasts, lunches and coffee breaks, and all workshop documents.

We recommend you register early considering participation will be limited to the first 60 registered participants to have manageable brainstorming sessions, and promote direct interactions between most research and industry participants over the workshop period. Please note late fee charges of €100 apply for registration after March 8, 2007.

## GLIP fellowship

The GLIP has provided funds to cover the registration fees of non-GL-TTP member organisations from developing countries. To apply for a GLIP fellowship, please send a letter to the workshop organising committee at [gl-ttp@prolea.com](mailto:gl-ttp@prolea.com) by February 8, 2007. The application letter must explain your specific interest in the GL-TTP workshop and possibly in participating in future GL-TTP projects. Please mention whether you could contribute, or benefit from, specific resources, technologies or services for GL-TTP projects. Successful candidates will be notified by February 26, 2007.

## Workshop committees:

### Advisory Committee (GL-TTP Executive Committee\* and founding members):

Noel Ellis*, President	JIC, Norwich, UK
Andy Flavell*, Vice-President	Dundee University at SCRI, Dundee, UK
Helge Kuester*, Vice-President	UNIBI, Bielefeld, Germany
Frédéric Muel*, Director	UNIP, Paris, France
Catherine Golstein*, Scientific Manager	GL-TTP, Paris, France
Alvaro Ramos*, Treasurer	Consejeria de Agricultura, Valladolid, Spain
Abdel Bendahmane, Founding member	URGV, Evry, France
Gérard Duc, Founding member	INRA, Dijon, France
Nathalie Munier-Jolain, Founding member	INRA, Dijon, France
Anne Schneider, Founding member	AEP, Paris, France
Peter Winter, Founding member	GenXPro, Frankfurt, Germany

### Co-chair Organisers:

Andy Flavell	Dundee University at SCRI, Dundee, UK
Catherine Golstein	GL-TTP, Paris, France

### Local Organising Committee:

Catherine Golstein	GL-TTP, Paris, France
Frédéric Muel	GL-TTP, Paris, France
Anne Schneider	AEP, Paris, France

# FIRST GL-TTP WORKSHOP - REGISTRATION FORM

23-25 April 2007 – Paris, France

Date (yyyy-MM-dd):

## 1. IDENTIFICATION

<b>SURNAME (LAST NAME):</b> <b>FIRST NAME:</b>	<b>TITLE:</b> <b>FUNCTION:</b>
<b>ORGANISATION:</b> <b>ADDRESS:</b> <b>CITY:</b>	<b>STATE:</b> <b>POSTCODE:</b> <b>COUNTRY:</b>
<b>PHONE: (country code) number:</b>	<b>E-MAIL:</b>
<b>GL-TTP MEMBER<sup>1</sup>: Yes: <input type="checkbox"/> No: <input type="checkbox"/></b>	<b>GLIP MEMBER<sup>2</sup>: Yes: <input type="checkbox"/> No: <input type="checkbox"/></b>

<sup>1</sup>If you are unsure of the GL-TTP membership status of your organisation, please contact [gl-ttp@prolea.com](mailto:gl-ttp@prolea.com) for confirmation.

<sup>2</sup>Note that all GLIP member organisations have an active GL-TTP membership until February 2008.

To help us serve you better during the workshop, feel free to indicate any special diet requirement:

## 2. WORKSHOP CONTRIBUTION

<b>Participant willing to contribute: <input type="checkbox"/> preferably in a talk: <input type="checkbox"/> or to be considered for a project proposal: <input type="checkbox"/></b>
<b>Proposed title for contribution:</b>

## 3. HOTEL RESERVATION

I wish to secure a hotel reservation at the workshop venue (Mercure Paris Bercy) for €130 per night, breakfast included.  
Nb of persons: Nb of rooms: single double with 1 bed: , 2 beds: Arrival date: Departure date:

Please note this option is available until March 8 only. All payments will be made directly to the hotel.

## 4. WORKSHOP REGISTRATION FEES AND CONTRIBUTION TO COST

Your organisation	Registration fee per organisation <sup>2</sup>	Contribution to cost per person (€80/day) <sup>3</sup>	Gourmet cruise (24 April)	Late fee charge after March 8	Total
GL-TTP member	<input type="checkbox"/> €	<input type="checkbox"/> €240	<input type="checkbox"/> €75 Nb of persons:	<input type="checkbox"/> €100	€
Non-GL-TTP member <sup>1</sup>	<input type="checkbox"/> € 500				

<sup>1</sup>Information on GL-TTP and GL-TTP membership can be found at [www.grainlegumes.com/gl-ttp/](http://www.grainlegumes.com/gl-ttp/) or from [gl-ttp@prolea.com](mailto:gl-ttp@prolea.com).

<sup>2</sup>Registration fees allow non-GL-TTP organisations to attend the GL-TTP workshop along with membership-fee paying GL-TTP organisations.

<sup>3</sup>Individual contributions help cover the costs of the workshop venue, three breakfasts and lunches, six coffee breaks, and all workshop documents.

## 5. FELLOWSHIP APPLICATION

I have applied for a GLIP fellowship to cover the registration fee of my non-GL-TTP member organisation.

## 6. PAYMENT PROCEDURE

I need a *pro forma* invoice in order to send my payment of € , or  
 I enclose a payment of € by:  cheque (made payable to GL-TTP) or  bank draft

<b>Bank branch:</b>	BNP PARIBAS ELYSEE HAUSSMANN
<b>IBAN number:</b>	FR76 3000 4008 1900 0110 3560 261
<b>Bank identification:</b>	30004 00819 00011035602 61
<b>BIC:</b>	BNPAFRPPPLZ

Please note that the fees should be paid in **Euros**. Please make sure that the name of your organisation clearly appears in any bank transaction, and that no transaction charges are left to GL-TTP. You will receive an invoice after payment.

You may return this form at the address below either by e-mail, FAX transmission, or post.

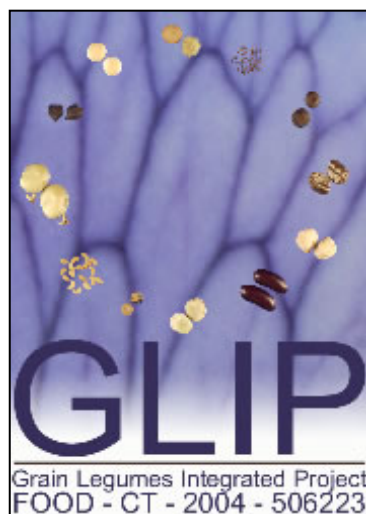
GL-TTP – 38, rue de Berri – 75008 PARIS – France  
e-mail: [gl-ttp@prolea.com](mailto:gl-ttp@prolea.com) – website : [www.grainlegumes.com/gl-ttp/](http://www.grainlegumes.com/gl-ttp/)  
Phone: +33 (0)1 40 69 49 21 / +33 (0)8 70 58 22 64 – Fax: +33 (0)1 47 23 58 72  
SIRET 484 239 496 00017 – APE 913E

## Important dates:

Deadline for submitting an abstract for contribution:	February, 8, 2007
Deadline for fellowship application:	February 8, 2007
Notification of GLIP fellowship recipients:	February 26, 2007
Notification of contributors to the workshop:	March 8, 2007
<b>Deadline for advance registration with reduced fees:</b>	<b>March 8, 2007</b>
Deadline for reservation of accommodation at the workshop venue at the special workshop rate:	March 8, 2007
Deadline for Gourmet Cruise reservation:	April 2 <sup>d</sup> , 2007
GL-TTP workshop kick-off	April 23, 2007

## Sponsor

We are immensely grateful to GLIP for making this first GL-TTP workshop possible.



## Further information

Please don't hesitate to contact us at [gl-ttp@prolea.com](mailto:gl-ttp@prolea.com) for any question or further information.

GL-TTP – 38, rue de Berri – 75008 PARIS – France  
e-mail: [gl-ttp@prolea.com](mailto:gl-ttp@prolea.com) – website : [www.grainlegumes.com/gl-ttp/](http://www.grainlegumes.com/gl-ttp/)  
Phone: +33 (0)1 40 69 49 21 / +33 (0)8 70 58 22 64 – Fax: +33 (0)1 47 23 58 72  
SIRET 484 239 496 00017 – APE 913E

GL-TTP – 38, rue de Berri – 75008 PARIS – France  
e-mail: [gl-ttp@prolea.com](mailto:gl-ttp@prolea.com) – website : [www.grainlegumes.com/gl-ttp/](http://www.grainlegumes.com/gl-ttp/)  
Phone: +33 (0)1 40 69 49 21 / +33 (0)8 70 58 22 64 – Fax: +33 (0)1 47 23 58 72  
SIRET 484 239 496 00017 – APE 913E